



The Lion's Path

URUGENDO RW'INTARE



UNIVERSITY OF
Global Health
EQUITY

2019 ANNUAL
ALUMNI REPORT

TABLE OF CONTENTS

WE ARE LIONS

UGHE's leaders and changemakers in global health

2

LIONS AROUND THE WORLD

How we are making an impact globally

4

LIONS AT HOME

Our engagement and outreach on campus

12

STAY CONNECTED

Strengthening our network to further our mission

16

Letter from the Alumni Council President



Fellow alumni, staff, partners, and friends of UGHE,

I have the honor to represent such a group of women and men dedicated to taking global health to the next level through the work done across different disciplines, including medicine, mental health, agro-veterinary, pharmacy, education, finance, research, and nutrition, to mention but a few.

Over the course of the three years that the UGHE Alumni Council has been operational, we have done much together in the pursuit of our vision, "To connect Lions for Health Equity." Through activities, including the recruitment and admissions of new Lions, get-together events, holiday parties with primary school students, and public speaking sessions, we have embarked on this journey to building a global and inclusive network of global health leaders who will advocate for health equity everywhere in the world.

The journey continues, and challenges await us on our way, but we have what it takes to overcome them and reach our objectives to build a networking platform for UGHE alumni, create social events, empower and engage with the community, and advocate for current students. With these objectives, our reputation and the impact to the community we serve will increase, and the world will be a better place for everyone.

In order for us to reach our goals, I encourage you to continue to be ambassadors for UGHE and global health everywhere you are by engaging in school organized events, community volunteerism, speaking events, conferences, and one-on-one mentorship. I request UGHE to facilitate this alumni connection by establishing a platform whereby we would share updates about where we are and the impact we are making to the rest of the world.

Let's join our efforts as we thrive to achieve global health equity across the world!

God bless you,

A handwritten signature in black ink, appearing to read 'Willy Ingabire', written in a cursive style.

Willy Ingabire
President of the Alumni Council, University of Global Health Equity

We are lions.

Since its opening in 2015, the University of Global Health Equity (UGHE) is proud to have nearly 100 alumni from its Master of Science in Global Health Delivery (MGHD) program, representing 13 countries, diverse academic backgrounds, and interdisciplinary professional experiences. UGHE's alumni are global health leaders and changemakers, equipped with the skills to investigate complex problems with a fresh lens, one that is multidisciplinary, open-minded, and empathetic yet critical.

As UGHE continues to grow, the Office of Admissions, Records, and Student Services aims to engage its diverse alumni community through the promotion of networking, fellowship, and professional development amongst its graduates. UGHE seeks to be a place where alumni can engage with each other through career resources, community events, and other networking opportunities. The following report tracks the activities of UGHE's alumni in 2019, including their career progress, academic achievements, and professional development goals. As this report demonstrates, UGHE's alumni are already having a significant impact on Africa and beyond.

ALUMNI PROFILE

92 alumni
All MGHD Cohorts

45.7% female

54.3% male

13 countries represented:

Rwanda, Burundi, USA, Tanzania, Malawi, Nepal, Canada, Kenya, Nigeria, Sierra Leone, Uganda, Australia, Mexico



46 new alumni
Most Recent Cohort

52.2% female

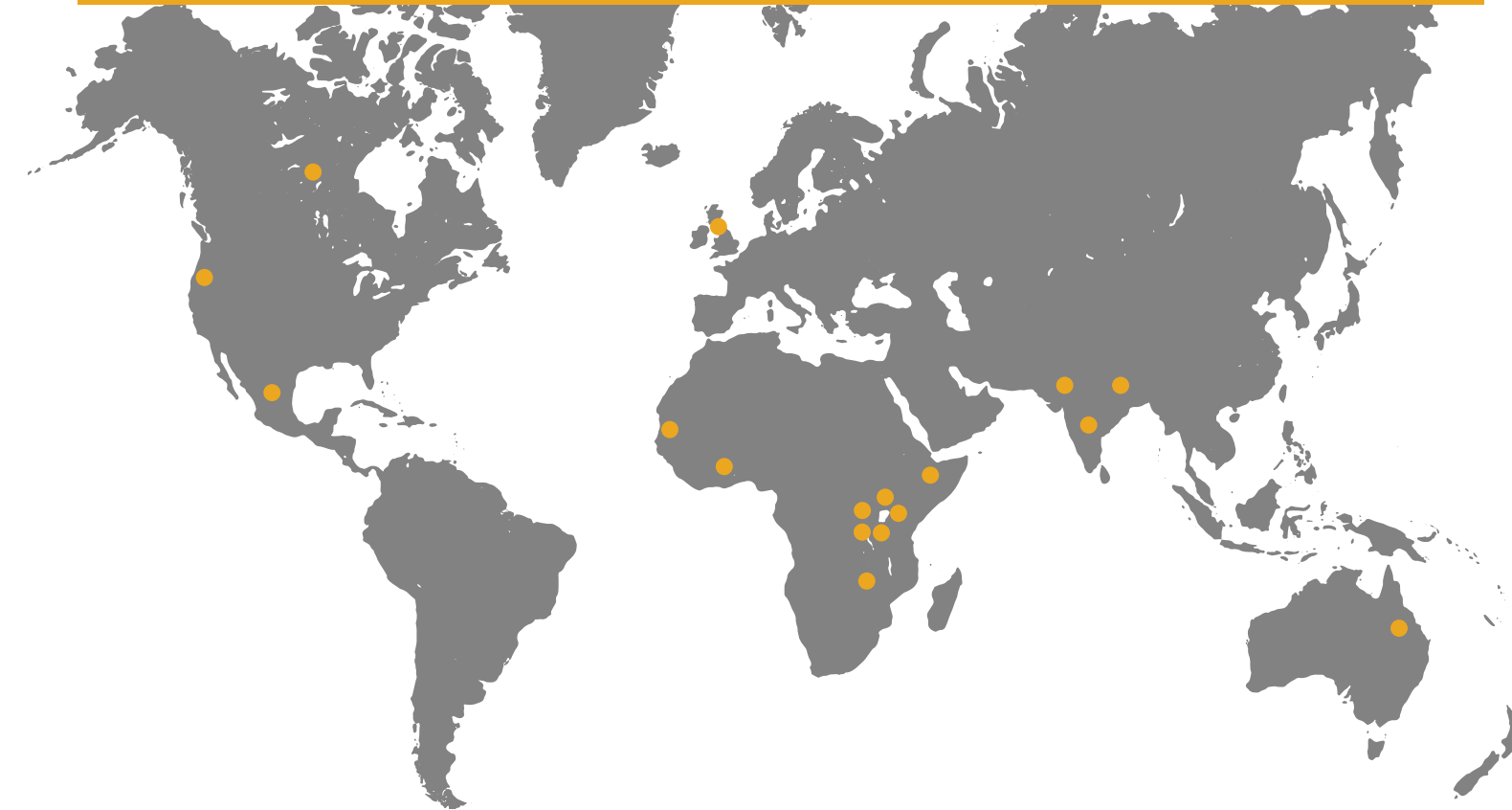
47.8% male

11 countries represented:

Rwanda, Burundi, USA, Tanzania, Malawi, Nepal, Canada, Kenya, Nigeria, Sierra Leone, Uganda

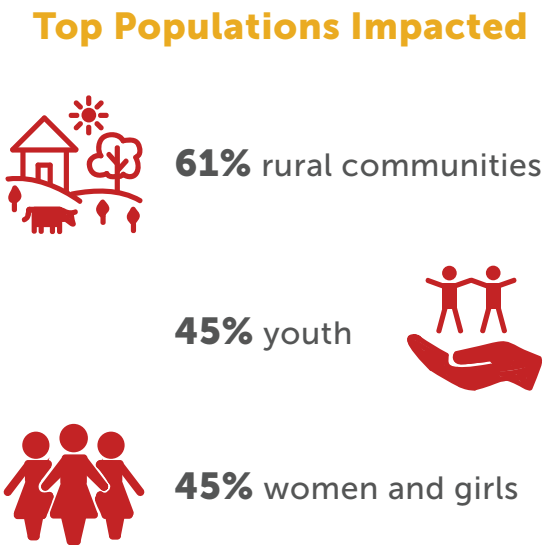
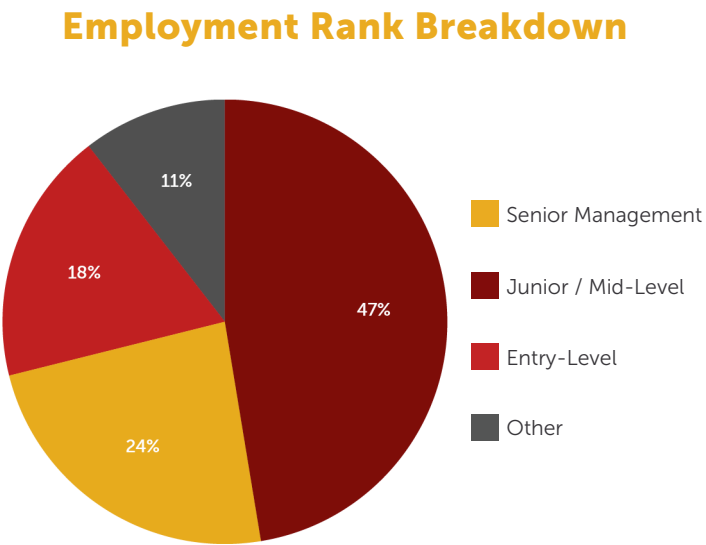
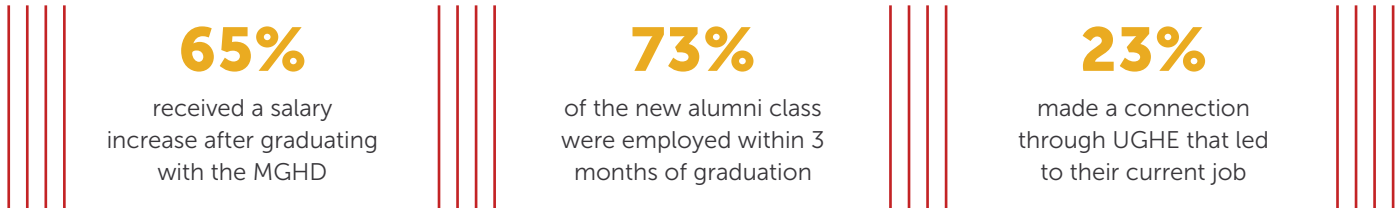
Lions around the world.

Our alumni hail from 13 different countries around the globe:



WORKPLACE ENGAGEMENT

Interdisciplinary collaboration is essential to improving health outcomes and achieving equitable global health care delivery. The MGHHD is an interdisciplinary program that is designed to support students in achieving their diverse academic and professional goals. As outlined below, our alumni are having a significant impact across nations, organisational departments, and populations.



Alumni are working across Africa and beyond, including **Rwanda, Sierra Leone, Malawi, Uganda, Kenya**, and the **United States**.



“At UGHE I learned alongside a new breed of leaders who dare to change the world every day. They taught me that ensuring quality health for all is a multidisciplinary task which extends far beyond the walls of a hospital or clinic. UGHE showed me that when you remain curious, take the time to listen and understand the system, and are bold enough to question the status quo, you can prove that the impossible is truly possible.

– Claire Kimilu, MGHHD '19

“The MGHHD equipped me with a toolkit to conduct a 360 degree analysis of health and healthcare challenges that Rwanda is facing and therefore participate in conducting research aimed at addressing those challenges.

– Dr. Yvan Butera, MGHHD '17



ACADEMIC & PROFESSIONAL DEVELOPMENT

19%

currently enrolled in further studies at higher learning institutions, including:



100%

of alumni enrolled in further study feel that UGHE prepared them well.

“The MGHD helped me adjust to my new working environment, where I get to meet people from around the world. It improved my intercultural skills, and I was able to adapt to a different cultural setting and understand my colleagues’ and patients’ different cultural contexts and viewpoints.

– Arsène Hobabagabo, MGHD '18



AWARDS & HONORS

UGHE alumni are proud to receive a number of awards and honors for their work, including:

- 120 Under 40: The New Generation of Family Planning Leaders
- Aspen New Voices Fellowship
- Chevening Scholarship
- International Research Travel Award
- National Institutes of Health (NIH) Research Fellowship
- One Health Fellowship
- Rwanda Ministry of Health District Operational Research Challenge Fund

CONFERENCES

UGHE alumni are increasing their impact by participating in numerous conferences as participants, delegates, and presenters, including:

- Keystone Symposia on Molecular and Cellular Biology
- Joint Rwanda Society of Obstetrician and Gynecologists and Rwanda Pediatric Association Conference
- Proposal Writing, Review Process, and Grant Management Training Workshop
- Rwanda Community Pharmacists Union Annual Conference
- Council of International Neonatal Nurses Congress
- Social Medicine Consortium Annual Retreat on the Campaign Against Racism
- One Health Central and Eastern Africa (OHCEA) International Conference
- Newborn Health Symposium
- Association for International Agriculture and Rural Development Annual Conference
- YPO Edge, Health and Humanitarian Logistics, Alquity Improving Lives
- 54th Annual Meeting of the European Diabetes Epidemiology Group
- Accelerating SL@B Conference, Duke Global Health Innovation Center
- 1st COINN Conference in Africa, New Frontiers for African Neonatal Care
- Annual Research and Innovation Exhibition, University of Rwanda - College of Agriculture, Animal Science, and Veterinary Medicine
- Climate Change, Child Survival, and the Future of Global Health Equity
- Rwanda Society of Anesthesiologists Annual Conference
- Women Deliver Global Conference

MGHD IMPACT

The MGHD prioritises hands-on and practical field experiences; a focus on “systems” rather than symptoms; and leadership and management skills. Upon completing the MGHD, alumni evaluate their experiences in the MGHD and the impact it has had on them.

87%

agree that their
current role relates
to the MGHD

89%

agree that faculty
encouraged them to
challenge their own ideas
and the ideas of others

93%

agree that faculty
were accessible
outside of class

96%

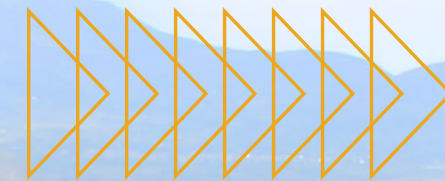
agree that
faculty had high
expectations for the
quality of their work



“ I am intellectually inquisitive now. This has enabled me to be open to new ventures and collaborations in the global health field. After completing the UGHE course, I have started looking at things from a wider perspective. Thus the skills and knowledge I have gained from UGHE is contributing to my better performance at work, my negotiations, and my partnership skills. On a personal level, the course I studied has helped me understand my own interests, strengths, and weaknesses.

– Bobby Rawal, MGHD '19

Lions at home.



UGHE'S BUTARO CAMPUS

UGHE's Butaro Campus is always home for its Lions, and alumni are encouraged to participate in engagement and outreach events throughout the year. Below are some highlights of the alumni engagement events in the 2018-19 academic year.

41%

of alumni participated in a UGHE-sponsored alumni activity during the 2018-19 academic year



Admissions & Recruitment Outreach

Alumni support the recruitment and enrollment of future generations of Lions through their participation in school visits, student outreach, Admissions Committee meetings, and more.



YouthConnekt Africa

Alumni represented UGHE at YouthConnekt Africa, which aims to find solutions to challenges that African youth are facing through social, leadership, and economic initiatives.

Turi Hamwe!

Kinyarwanda for "We are all together," Turi Hamwe! was UGHE's first event bringing together current students, staff, and alumni for a day of professional networking, activities, and community engagement on the Butaro campus.



Alumni Breakfast

Alumni gathered together over the 2019 commencement weekend to celebrate their achievements, network, and share a meal. Alumni then celebrated current students at UGHE's commencement ceremony.

Stay connected.



@ughe.org



@ughe_org



@ughe_org



University of Global
Health Equity

Together, we can realise our
mission to radically change
the way health care is delivered
around the world.



ughe.org

RWANDA

Kigali Heights, Plot 772 | KG 7 Ave., 5th Floor
PO Box 6955 | Kigali

UNITED STATES

800 Boylston Street, Suite 300
Boston, MA 02199