



UNIVERSITY OF
Global Health
EQUITY



IMPACT REPORT | 2021



“At UGHE we study and revisit power dynamics within the health sector. The primary question driving our policies, strategies, and activities is ‘What is most beneficial to the health and wellbeing of the most vulnerable?’ Accordingly, we train health professionals to always account for the social determinants of health that can create or exacerbate illness. We also teach by ‘walking the talk’ within the UGHE and the larger OnePIH family, exemplifying how we can turn up-side-down traditional power dynamics through the implementation of equitable policies and strategies within our own institutions and our Butaro community.”

Professor Agnes Binagwaho,
Vice Chancellor, UGHE



MGHD Graduation, Class of 2021



23 Graduates

7

MGHD One Health graduates

16

MGHD Health Management graduates

ADMISSION CYCLE FOR MGHD '21

435

Total Applications Received

5.75%

Acceptance rate

Enrollment of MGHD '21

25 Students

from 13 Countries

68%

of enrolled students had at least 3 years of work experience

Education Background

Medicine

32%

Public Health

4%

Health Management

36%

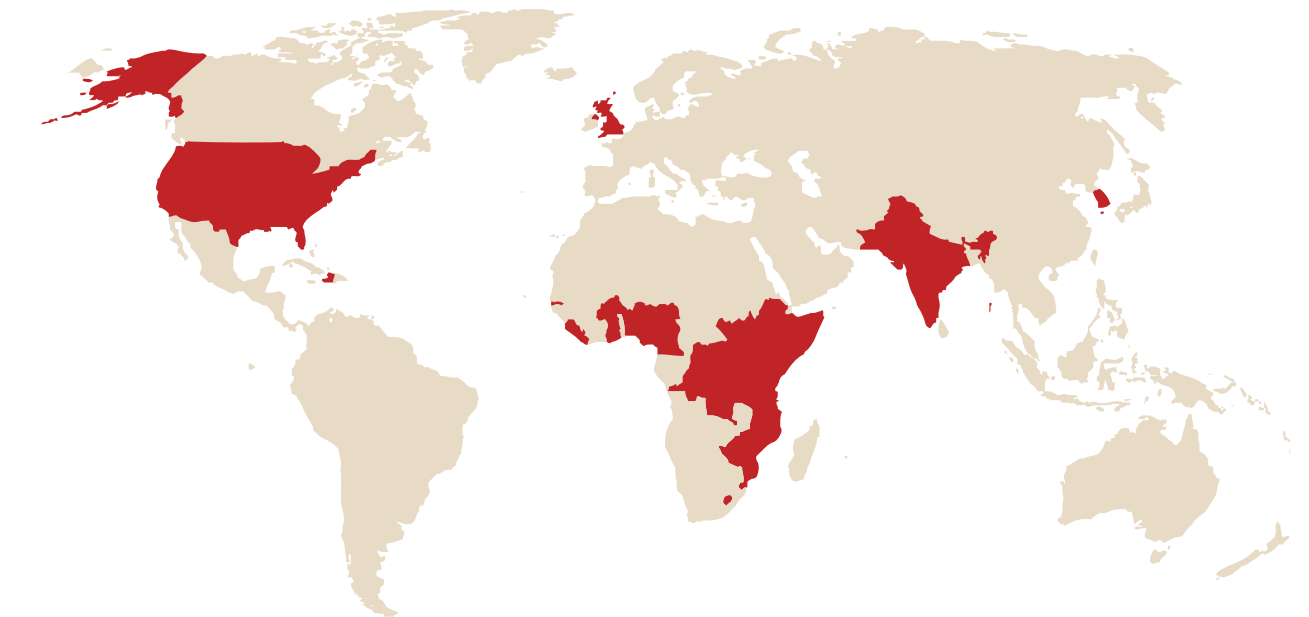
Others

28%



MGHD '21

The Master of Science in Global Health Delivery (MGHD) at UGHE equips a generation of global health professionals with the tools and knowledge to deliver effective and equitable quality health services for all.



Scholarship Support provided to students:

100%

of students receiving a full or partial scholarship to study

95%

average financial aid coverage

MGHD'21 SCHOLAR



"I believe that we must wear equity lenses in everything we do. I am eager to work on community health organizing via a single health lens, ensuring that health systems are strengthened. As a One Health scholar, I learned about a paradigm for understanding global health systems and how it values the interconnectedness of people, animals, and the common environment."
Yeukai Chikwenhere, Nancy and Chris Deyo MGHD'21 Scholar, One Health option.

MBBS/MGHD'25 SCHOLAR



In my childhood, I was fascinated by science. The sufferings and illnesses I witnessed in my village among vulnerable people and their inability to access quality health services, compelled me to pursue medicine. I wanted to be a doctor to address these health issues in my community. I had lost hope when no institutions abroad could offer me a scholarship in medicine. UGHE's MBBS/MGHD program provided a solution."
Alima Uwimana, MBBS'25 student.

OUR MGHD'20 ALUMNI

- > **84%** of MGHD '20 went into full time employment within one year of graduating
- > **65%** are working in mid-level roles and above
- > **96%** of MGHD '20 alumni said the MGHD supports them in their current role.

Key settings where MGHD '20 alumni are working



23%

rural communities



26%

women & girls



23%

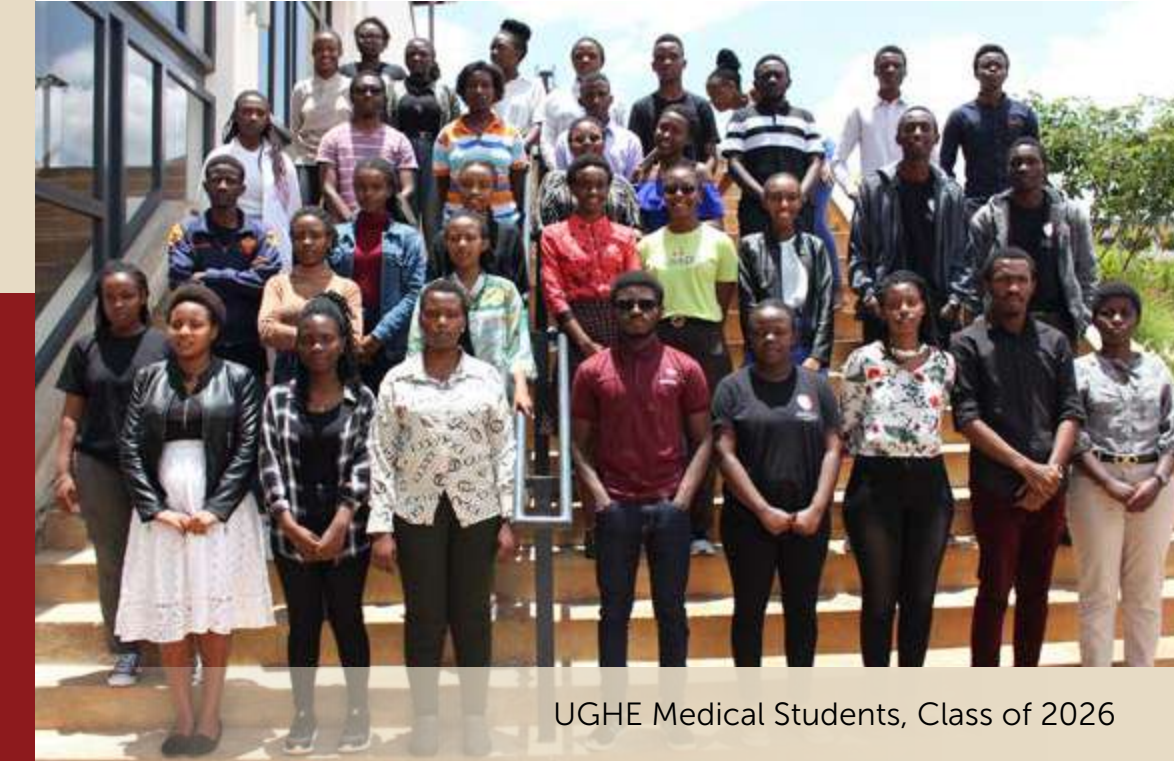
youth



38%

education

MBBS/MGHD



UGHE Medical Students, Class of 2026



CLASS OF 2026

36 students

100% from Rwanda

24 female

66% of the cohort

STUDENT PROFILE: Sabrina Gwiza



Sabrina Gwiza, MBBS student Class of 2026

"Since I was a child, I aspired to be a medical doctor, specifically in the psychiatric field. I've often wondered why some communities have few or no mental health facilities, since I had an aunt who had mental health difficulties that were not addressed early on, and I couldn't do much about it. My choice as a kid who wanted to assist my aunt and individuals suffering from mental problems was to become a medical doctor. I was relieved to discover about UGHE just as I was ending high school, I truly wanted to be a part of it. Now that I'm being trained to be a physician by the best faculty at UGHE, I'll not only be doing the MBBS program but I'll also be trained to be a global health leader in the MGHD program on a full scholarship, which is a fantastic opportunity that will help me achieve my dream of supporting my community through a medical career. I applaud UGHE's commitment to equity in all its initiatives." **Sabrina Gwiza, MBBS/MGHD'26**

Intare Surgery Interest Group (ISIG), an association of medical students at UGHE who are aspiring to pursue a career in global surgery and different surgical subspecialties conducted the following activities:

- Organized a webinar uniting diverse leading global health experts from across the globe, who shared evidence of the importance of blood donation on strengthening delivery of healthcare.
- Held a Blood Donation Project in June 2021 to collect blood from members of the UGHE community with support from UGHE and the Rwanda Biomedical Center (RBC).
- Organized a fundraising activity in April 2021 and collected 401,000 Rwandan Francs from the UGHE community to help Butaro District Hospital surgical patients get access to basic hygiene needs.



One of the MBBS students donating blood on Butaro campus, June 2021



EXECUTIVE EDUCATION

Alongside its flagship MGHD, UGHE offers executive education training programs for global health professionals.

A testimonial quote from one of the Executive Education (EE) leaders/ learners who has experienced EE programming firsthand.

“Global Leadership in Nursing and Midwifery Executive Education Program helped develop my leadership in that it taught me to look more widely at all of the factors that would go into the initiative such as needed resources, financial implications, and key stakeholders which is important and critical to the success of the project.”

Teresa Ann Graves, Global Leadership in Nursing and Midwifery Executive Education Program Class of 2021.



Executive Education Program participants in a group discussion on Butaro Campus.

Impact Figures for 2021

12 | Countries represented

50 | Trainees

42 | Days in-person/ virtual programming





The Center for Nursing and Midwifery

The Center for Nursing and Midwifery worked with the Center for Executive Education to launch the Inaugural Global Leadership in Nursing and Midwifery (GLNM) Executive Education Program which has 26 students from 6 countries both within and outside Africa.

The center also secured partnership with the University of Washington, African Forum for Research and Education in Health (AFREhealth), and Consortium of Universities for Global Health (CUGH).



The Center for Gender Equity:

The Center for Gender Equity launched a mentorship program and provided follow up and support for the first cohort of MGHD20 students and selected WLGH19 leadership trainees. It also welcomed a second cohort of 30 mentors and 30 mentees.

The UGHE's Mentorship Program is a pioneering two-year program hosted by the Center of Gender Equity that provides formal frameworks for a transformative mentorship experience in Africa that centers early-career, female, global health professionals.

Initiated in May 2020, with two cohorts of 25 and 30 pairs of mentors and mentees respectively, participants in the two-year long mentorship program hail from 27 countries across the globe, including 19 African countries, and make up 71% female and 29% male mentors and mentees.

In August 2021, the Center for Gender Equity welcomed the first cohort of 18 Gender & Sexual and Reproductive (GSRH) track students from 9 countries under UGHE's MGHD program.

The Center also partnered with 7 civil society organizations working on Gender and SRH issues for students practicum projects.

The Institute of Global Health Equity Research

The mission of the Institute of Global Health Equity Research (IGHER) is to focus on the development of collaborative, pioneering global health research, as well as the development and delivery of innovative and engaging research training for global health researchers and health professionals. Leveraging our internal expertise and know-how, UGHE research examines a wide spectrum of global health fields, including pedagogical and clinical practices, policy changes, interventions and technologies, and organization of health services and systems, with the ultimate aim of eliminating global health inequities

Key Research Achievements of 2021:

48	Research papers	26	Commentaries, editorials, and op-eds
3	Reviews	3	Podcasts

The Department of Community Health and Social Medicine

Background: Set up high in the hills of Butaro Sector, Burera District, UGHE's campus has been deliberately positioned to facilitate meaningful partnership with the surrounding community, and give students a holistic understanding of the unique challenges faced by vulnerable communities living in rural and remote settings.

Mission: UGHE is committed to community and social medicine through education, advocacy, research, and action which, combined, aims to address the social, economic, and political determinants of health through a community lens, and advancing community health across the globe.

Community-Based Education: After a long pause due to COVID, our Community-Based Education (CBE) course for MBBS students was held in May and June of 2021 and offered 2-weeks of dynamic, thoughtful, and engaging work in the classroom and in the community.

Student quote on the CBE course: "CBE has been such an eye-opening course that makes me realize why medical knowledge matters. I mean, it exposes me to the real suffering in the community and encourages me to get the most out of what I learn so that I can be best equipped to address the challenges.", Kevin Shimwa Gakuba from MBBS26

Community Faculty Capacity Building: Through its Community Health and Social Medicine Department, UGHE trained 72 community health workers (CHWs) on community-based education (CBE) teaching methodology, their role in community students learning and how to partner with students. UGHE community faculty received an introductory training on teaching methodology (lesson plan, teaching and evaluation) to facilitate them while teaching UGHE students during the CBE.



MBBS 25' student Axel Shimwa visiting a household in Butaro, May 2021



MBBS 25' student Tesi Lara learning Kangaroo mother care with CHW Jeanne Mukarurangwa, May 2021

The Center for One Health

Responding to increasing zoonotic diseases and pressing threats like climate change, the Center for One Health launched an MGH option in One Health, equipping students with a trans-disciplinary, multi-sectoral and holistic lens to improve animal, environmental and human health. This includes a 9-day field school to various sites across Rwanda."

Kikundi, a Community of Practice (CoP) for Neglected Tropical Diseases (NTDs) Program Managers, was developed in collaboration with the University of Washington (UW) to create a strong, digitally-supported community for African NTD Program Managers, a platform through which participants can learn from one another in-person or online and collaborate in the pursuit of reaching national and global NTDs benchmarks.



NTD Program Managers visited one of the lymph-edema management centers, November 2021



UGHE's MGH One Health students visited different places as part of their field school, April 2021

Socio-economic Impact, Community Engagement

Contributing to Socio-economic Impact

CBHI (Community-Based Health Insurance), locally known as "mutuelle de santé"

UGHE mobilized **one million two hundred and twenty eight thousand (1,228,000)** Rwandan francs. These contributions will pay for the medical insurance for 410 community members who cannot afford it.

Job creation

3000 new jobs created in campus development during construction

Guarantee that 70% of these positions, both skilled and unskilled will be women, creating long term employment opportunities as well as fighting gender discrimination and equity in a critical and well-paid element of the economy.



Diane Niyotwagira, Campus Cleaner, November 2021

COVID-19's rapid transmission has made the roles of cleaners critical to the protection of everyone on Butaro campus as their work focused on the prevention of the virus transmission.

"I understand very well that my role is key to keeping the campus, and those living here, safe. I have improved the way I do my daily work. I used to clean campus chairs, door handles, and desks – objects people touch frequently – once a day. Now I do these twice with soap, water and sanitizer. I make sure all washing stations are clean and have soaps."

Diane Niyotwagira, Campus Cleaner

Building an Enduring Institution

- Phase II Butaro Campus expansion
- Butaro District Hospital expansion
- Institutional Development and Online Learning
- Leveraging New Innovations in the Virtual Classroom
- Supporting the Government of Rwanda in the response to COVID-19
- University Campus Expansion

UGHE completed the Butaro Campus Master plan and detailed design. Once fully implemented, this will allow UGHE Butaro Campus growth to accommodate up to 1,000 residents. The overall construction timeline for the project is set at one and a half years broken into 5 phases. These include overlapping stages beginning with 3 months of site prep, excavation, civil works, and backfilling. The site prep is followed by 6 months of structural works, construction of the skeleton of the building and concrete works, and 6 months of installation of electrical, mechanical, and ventilation, with 3 months of this phase overlapping with the structural construction. This work is followed by architectural and finishing work, including plastering, the installation of windows, doors, tiles, and painting.

Finally, there are 3 months of external works, the building of retaining walls, landscaping, the installation of livable spaces such as benches, and the opening of the building for use by faculty, staff, and students. This project is estimated to employ 60 skilled workers, 90 semi-skilled local manual laborers, and 20 consultants including engineers, project managers, architects, and surveyors.



Butaro District Hospital Expansion

In December 2021, Partners In Health (PIH), the University of Global Health Equity (UGHE), and the Rwandan government broke ground on the next phase of growth for PIH-supported Butaro District Hospital.

The ambitious, multi-year construction project is set to expand the hospital, located in Burera, from 140 to 240 beds and further establish it as a leading medical institution and teaching hospital in the region. The construction will take place in two phases and is expected to be completed in August 2023.

These changes will improve the quality of care and, as a result, will save lives. Additionally, the project aims to further establish the hospital as a leading medical and scientific institution in the region, paving the way for its accreditation as a teaching hospital and providing a fertile training ground for students from the University of Global Health Equity (UGHE), which sits just across the valley.



Butaro Hospital Expansion Groundbreaking, December 2021



Arts and Culture in Global Health Public Engagement

UGHE believes that building bridges across sectors is a necessity to sustainably transform global health education and delivery. Hamwe Festival was therefore created to serve as an enabling environment for a strong collaboration between the health and creative sectors, and a platform to generate critical insights into global health challenges, leveraging the unique and complementary vantage points of creative and global health professionals.

Hamwe Festival 2021

UGHE's third annual Hamwe Festival held in November 2021 gathered global health practitioners, researchers, performers and artists, and featured UGHE and PIH leadership, the Honorable State Minister of Youth and Culture, and Director General of the Rwanda Biomedical Center (RBC).

- Short films produced by Rwandan filmmakers, part of the "Visualizing the Virus" project, an interactive international project with an aim to explore how the Covid-19, how its consequences are visualized, imagined, and the inequities it reveals were screened.
- A short story contest about life in the era of COVID-19 was organized in collaboration with Kigali Public Library. A diverse expert jury selected 14 stories - in both English and French - from 479 submissions, demonstrating how the current pandemic has impacted people's lives and how health equity and other inequities of social justice have been exacerbated.
- The festival featured riveting performances including live music and poetry performance by different known artists.

63

Performers

30

Countries represented by speakers and artists

16

Panels



Thanking our Supporters and Partners

Everything we do at UGHE is due to the generous support of our donors, supporters, and thought leaders. Over the six years since our inception, global health systems have been tested in ways they haven't been in generations, and the case for a university focused on equity, social justice, and global health leadership has never been clearer. We are deeply grateful to all of you for your continued belief and investment in our students, staff, and alumni network around the world.

We would also like to personally thank our founding and key donors including the Cummings Foundation, Bill and Melinda Gates Foundation, CRI Foundation, St. Goar and Godley Families, Ben and Julia Kahrl, the Moskovitz Family, and the Segal Family Foundation



Thought Leadership & Global Advocacy

Conferences/webinars

104 | Webinars

22 | UGHE hosted

82 | UGHE contributed

Social Media



33.5K Followers across UGHE Social Channels including Twitter, LinkedIn, Facebook, Instagram, as well as YouTube subscribers.



L'Oréal-UNESCO For Women in Science Award

In 2021, UGHE's Vice Chancellor Professor Agnes Binagwaho was among the 5 prominent scientists who were awarded the 2021 L'Oréal - UNESCO Awards for Women in Science - Laureate for Africa and Arab states.



100 Most Influential African Women

UGHE's Vice Chancellor Professor Agnes Binagwaho was recognized, for the second time, in Avance Media 2021 list of 100 Most Influential African Women who inspire the next generation of women across the globe.



UGHE's Vice Chancellor Professor Agnes Binagwaho received the International Conference on Public Health in Africa (CPHIA 2021) Award for Global Health Leadership.



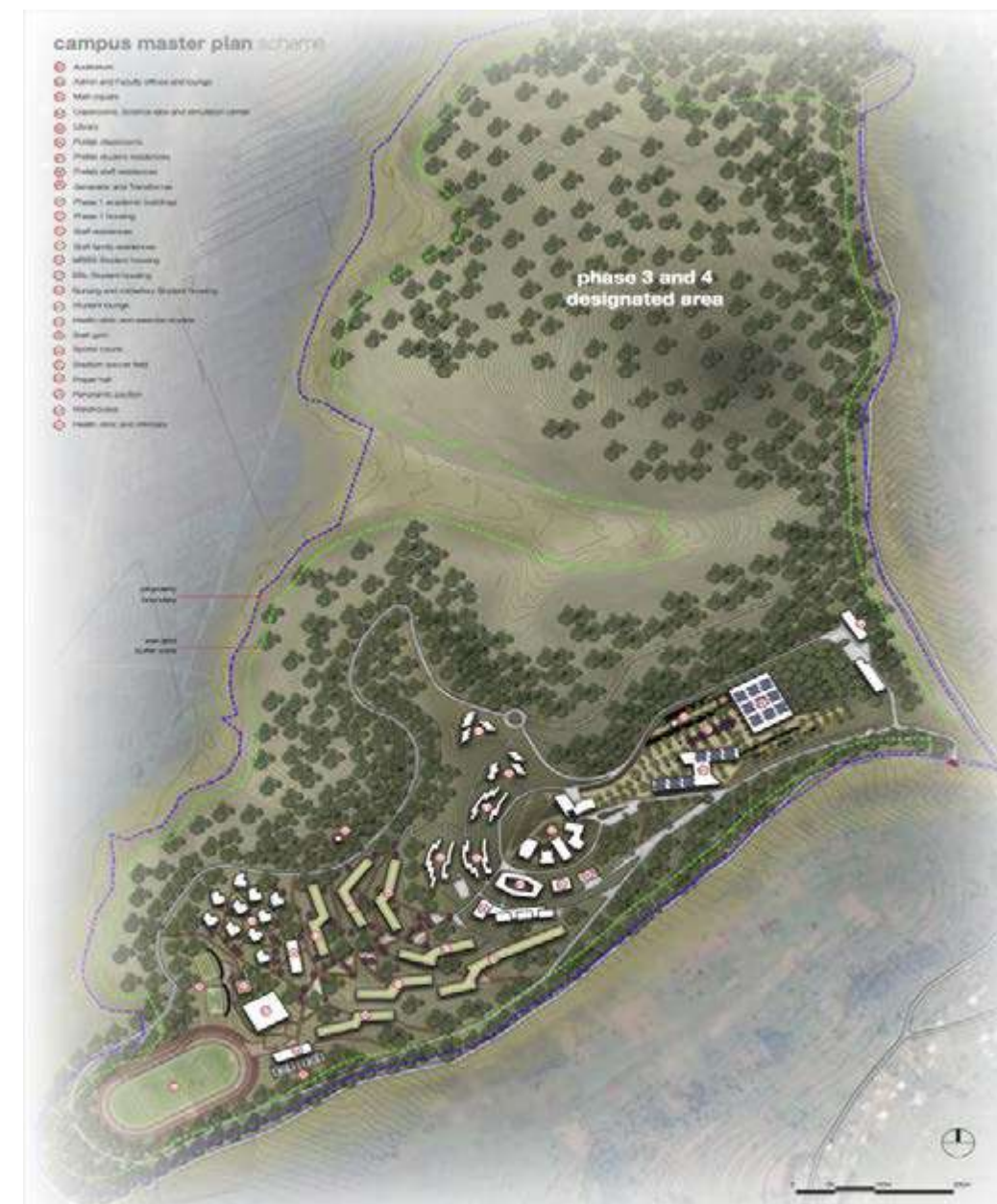
Second Cohort of the UGHE's Mentorship Program, Center for Gender Equity, October 2021



UGHE's One Health Students in the Field Investigating the Links between Animal, Environment, and Human Health, April 2021



UGHE's School of Medicine Hosted the First Cohort of Medical Students' White Coat Ceremony Dec 2021



UGHE Butaro Campus Master Plan, December 2021

ughe.org

RWANDA

Kigali Heights, Plot 772 | KG 7 Ave., 5th Floor
PO Box 6955 | Kigali